



SURROUNDING

With the concept of creating a comfortable and green environment to the Ixora tenants, the apartment has stressed about its surrounding greenery and thus the grown trees are bringing shedding to ease the hotness of this tropical place today.



Swimming Pool

In the center of the blocks where the swimming pool is, measures about 36m x 12m with a depth of 1.5m. It is surrounded with lush trees in full bloom.



Car Park

Car park vacancy, total 586 parking lot. Car park is fully covered and lighty, the security guards will patrol regularly to ensure the safety of your vehicle.

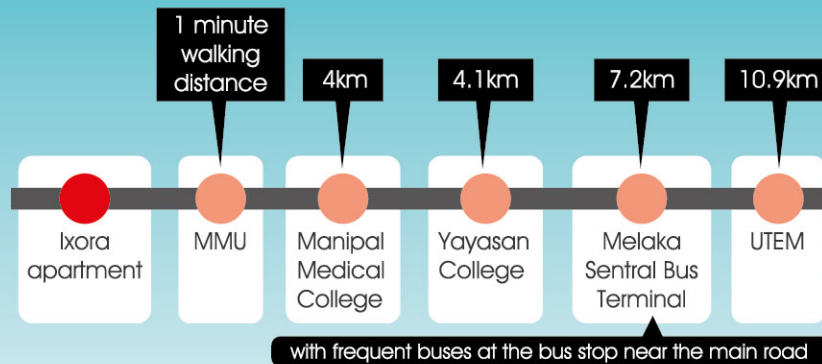


Food Court

In the Ixora Food Court, there is a variety of gourmet, with namely Yong Tau Foo, Nasi Lemak, Ayam Penyet, mixed rice (vegetarian or non-veg) and many others in the checklist.



Only **1 min** to MMU



Location Map



GPS **2°15'07.3"N**
102°16'38.0"E

Contact:

606. 231 2333

MC Office

016. 260 7511

Block A & B Managed by:

Ixora Management Sdn. Bhd.
(976591-X)

Block C & D Managed by:

PBR Management Sdn. Bhd.
(652527-X)

MC Office, Ixora Apartment Bukit Beruang,
75450 Melaka. Fax: 06- 231 2111

Email: pbr_ixora2u@yahoo.com



Operation Hours

Mon-Fri 8:30am ~ 5:30pm
Sat 8:30am ~ 12:30pm

scan me



For more information, please visit
www.ixora2u.com



ixora
apartment
— Bukit Beruang, Melaka —
宜家园

OPEN for

RENT

Security
Convenience
Best Location

PRICE AS LOW AS
RM 195

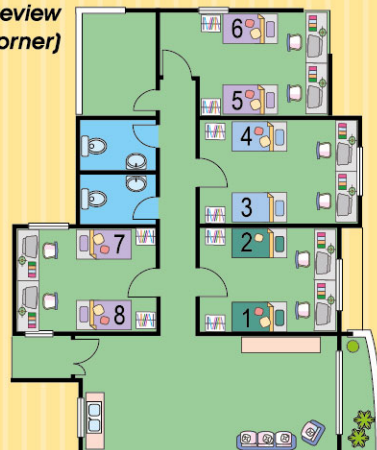
Floor Plan

Block A B & C

Block A, B and C
Monthly rental, ranging from
RM 195 to RM 425

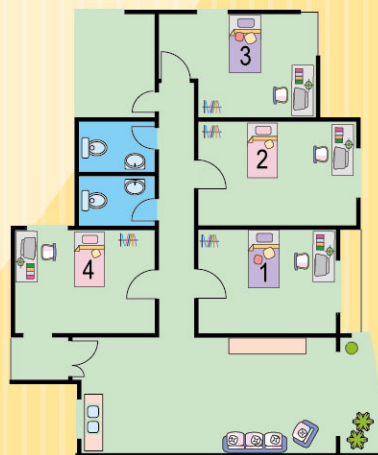
Twin Bedroom 1 ~ 17 floor

Floor Plan Preview (Corner)



Single Bedroom 18 floor

Floor Plan Preview (Corner)



Single Bedroom



Living



Twin Bedroom



Twin Bedroom



Block D

Floor Plan Preview (Corner)



Block D

Monthly rental, ranging from
RM 220 to RM 445

Single Bedroom



Living



Twin Bedroom



Twin Bedroom



Requirements

- Passport size photo (1 pc)
- Photostate I/C (1 pc)
- University Offer Letter or
- Student ID



more than just a
Student's
apartment...



Touch & Go Access Card



FACILITIES

便利设施



Lift



24 Hours Security

Lighted Covered Walkway



邻近便利 NEIGHBOURHOOD



Badminton Hall



Gymnasium



Saloon



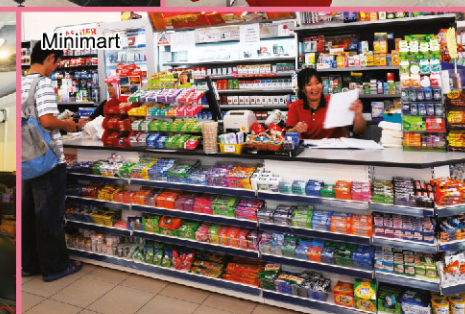
Laundry



Cafe



Cyber Cafe



Minimart